

EXAMPLE ONLY

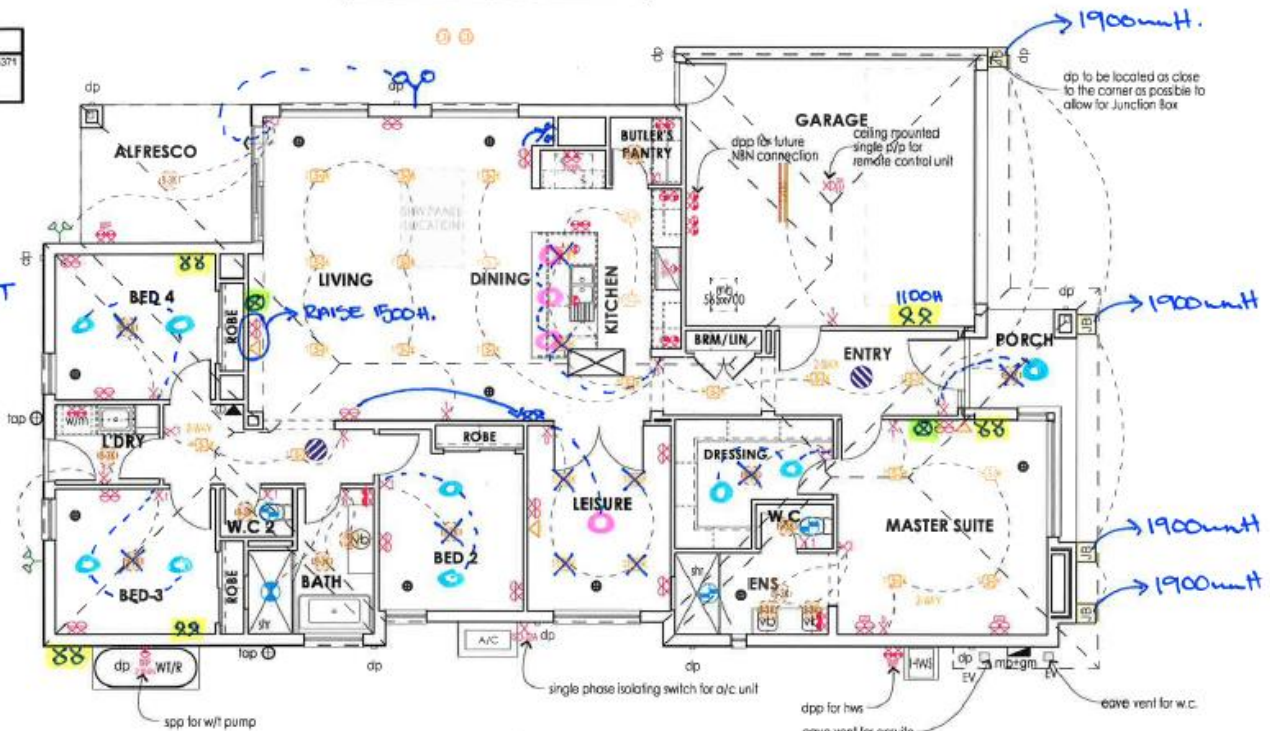
PROVIDE ROOF PENETRATION TO KITCHEN RANGEHOOD, BATHROOM, & W.C.2 TO ACHIEVE NCC VENTING REQUIREMENTS

PROVIDE 13.0kW ADD ON REFRIGERATIVE AIRCONDITIONING INCLUDING ADDITIONAL ZONE MOTOR, 1 CONDENSER AND SINGLE PHASE POWER.

FINAL DRAWINGS

CHECKED BY: ITS-MKH EXT No. 5371
 CHECKED TO: TENDER 2
 DATE: 25/03/20

- X DELETE
- DOWN LIGHTS
- BATTEN/PENDANT LIGHT POINT
- FLOOD LIGHT
- ⊗ DOUBLE POWER POINT
- ⊗ DATA POINT



ELECTRICAL LEGEND

- ⊗ 10A DOUBLE EXTERNAL POWER POINT @ 750mm
- ⊗ 10A DOUBLE POWER POINT @1100mm
- ⊗ 10A DOUBLE POWER POINT @1350mm
- ⊗ 10A DOUBLE POWER POINT @300mm
- ⊗ 10A DOUBLE POWER POINT @750mm
- ⊗ 10A DOUBLE POWER POINT AS NOTED
- ⊗ 10A DOUBLE POWER POINT WITH USB POINT @300mm
- ⊗ 10A POWER POINT IN CEILING @2720mm
- ⊗ 10A SINGLE EXTERNAL POWER POINT AS NOTED
- ⊗ 10A SINGLE POWER POINT @750mm
- ⊗ 10A SINGLE POWER POINT AS NOTED
- X 10A SWITCH
- ⊗ CEILING EXHAUST FAN + DRAFT STOPPER 25 L/SEC SWITCHED WITH LIGHT
- ⊗ DIMMER SWITCH
- ⊗ DIRECT WIRED SMOKE ALARM
- ⊗ EXHAUST FAN + DRAFT STOPPER
- X ISOLATOR SWITCH (1 PHASE)
- ⊗ JUNCTION BOX @1500mm (UNLESS NOTED OTHERWISE)
- ⊗ METER BOX @1900 TO TOP (GAS METER BELOW)
- ⊗ TELEPHONE / DATA FIBRE OPTIC POINT @ 300mm (UNLESS NOTED OTHERWISE)
- ⊗ TELEVISION ANTENNA POINT @300mm (UNLESS NOTED OTHERWISE)

LIGHTING LEGEND

- ⊗ CEILING BATTEN LIGHT FITTING (9w)
- ⊗ DOUBLE FLUORESCENT LIGHT (1200) (36w)
- ⊗ DOUBLE LED FLOOD LIGHT
- ⊗ INT. WALL BATTEN LIGHT FITTING @ 1800mm (UNLESS NOTED OTHERWISE) (8w)
- ⊗ LED DOWNLIGHT (WARM 3000K) (11.5w)

HVAC LEGEND

- ⊗ A/C CONDENSOR
- ⊗ CEILING HEATING OUTLET
- ⊗ HEATING THERMOSTAT
- ⊗ HEATING UNIT (LOCATED IN CEILING)
- ⊗ RETURN AIR

Lighting Calculator

Area	Area (m²)	Max Wattage Permitted (MAX 3w p/m²)	Number of LEDs	Total Watts	Watts	Watts
Internal House Area (NOT inc garage, alfresco etc)	180.9m²	905w				
		40			425	
					425	2.35 p/m²
Outdoor Area (Alfresco, Balcony, Porch, Verandah)	15.9m²	64w				
		2			18	
					18	1.13 p/m²
Garage Area	24.1m²	108w				
		1			35	
					35	1.50 p/m²

* Where external lights are provided, all external lights are to have a daylight sensor or have an average light source efficacy of not less than 40 lumens/W.
 * LED downlight manufacturer codes: C31 10-W09-W, C3110-H09-W.
 * All LED downlights are to be sealed with insulation laid over.